



**INNOVATION
TECHNOLOGY
ENTREPRENEURSHIP**

**ALAN B. LEVAN | NSU BROWARD
CENTER OF INNOVATION**

John Wensveen, Ph.D. | Chief Innovation Officer, NSU | Executive Director, Alan B. Levan NSU Broward Center of Innovation | jwensveen@nova.edu

| Assistant Executive Director, Programs and Membership | pyoung1@nova.edu

Terry Grandal | Assistant Executive Director, Administration and Operations | grandal@nova.edu

Gabriela Alvarado | Director, Community Engagement | galvarad@nova.edu



www.nova.edu/innovation



954-246-TECH | 833-954-TECH



innovation@nova.edu



@SFLInnovation

Levan Center Overview

The Alan B. Levan | NSU Broward Center of Innovation (Levan Center) is a public-private partnership between NSU and Broward County, designed to be an economic and education development engine for South Florida. The Levan Center's three themes (innovation, technology, entrepreneurship) and four pillars (Ideate, Incubate, Accelerate, Post-Accelerate), support the founder's journey from birth of an idea through successful exit or global expansion with customized programs, events, and wraparound services.

The Levan Center is a collaborative model linking entrepreneurs, academia, industry, government, funders, professional and social networks resulting in six key outcomes that will move South Florida in the direction of achieving designated tech hub status. Six key outcomes will have local, regional, national, and international impact (breakthrough ideation, new technologies, talent skills pipeline, company formation, job creation, scaling of early-stage and young startup businesses).

Your support will greatly assist elevating the South Florida innovation ecosystem.

Board of Governors

- **George L. Hanbury II**
 - *President & CEO, NSU*
- **Harry Moon**
 - *EVP & COO, NSU*
- **Ron Chenail**
 - *EVP & Provost, NSU*
- **Alan B. Levan**
 - *NSU Trustee, Chairman, Levan Center of Innovation, Chairman, BBX Capital Corporation, Chairman & CEO, Bluegreen Vacations Corporation*
- **George Platt**
 - *NSU Trustee, Managing Partner, LSN Partners*
- **Bertha Henry**
 - *Broward County Administrator*
- **Bob Swindell**
 - *CEO, Greater Fort Lauderdale Alliance*
- **Marcell Haywood**
 - *CEO, Encompass Online*
- **Keith Koenig**
 - *CEO, City Furniture*
- **Ron Antevy**
 - *President & CEO, e-Builder*
- **Jonathan Wolfe**
 - *Sr. Director, AutoNation*
- **John Machado**
 - *CTO, Ultimate Kronos Group (formerly known as Ultimate Software)*
- **Licenia Rojas**
 - *Chief Engineer, TD Bank*
- **Javier Villamizar**
 - *Operating Partner, SoftBank Investment Advisors*
- **Open Seat**
- **Open Seat**

Customized: Programs, Events, Wraparound Services



Aviation & Aerospace



Financial Services



Global Logistics



Headquarters (Virtual)



Life Sciences (Health/Medical)



Manufacturing



Marine Industries



Technology

Themes
Innovation
Technology
Entrepreneurship

Pillars
Ideate
Incubate
Accelerate
Post-Accelerate

Collaboration
Academia
Industry
Government
Funders

Professional Associations

Goals
8



Outcomes

Breakthrough Ideation
New Technologies
Talent Skills Pipeline
New Jobs
Company Formation
Scaling Existing Businesses

Community Advisory Council
University Advisory Council
Community Think Tank



Four Pillars: Core Programming Overview

Ideate & Create: Problem Solution Validated

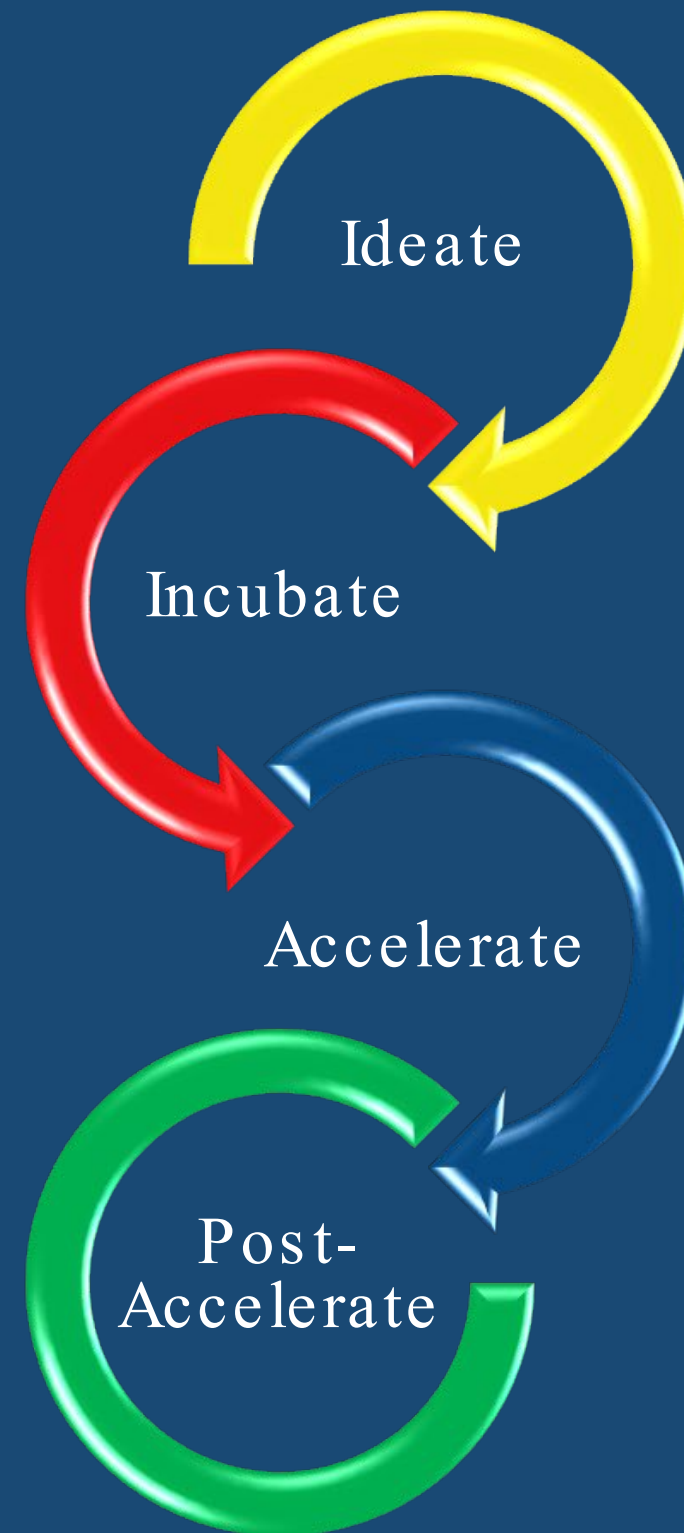
4-week program that assists entrepreneurs with development of an idea through design thinking and prototyping. This is a pre-seed stage where founders have access to resources to identify a clear idea to commercialize.

Cohort Offered: Bi-monthly
Capacity: 8-10 teams
Participants: 2 Co-Founders

Accelerate & Scale: Increased Funding, Customers and revenue

12-week program designed to increase funding, customers, revenue streams, and build further brand recognition. Teams are provided with a network to support further innovation and avoid growth plateau.

Cohort Offered: Bi-annually
Capacity: 20 teams
Participants: Co-founders; \$350K - \$3M revenue



Incubate & Implement: Product Market Fit & Product Team Confirmed

6-week program to advance the design thinking process from the ideate stage. Cohorts identify how a real pain point for enough people is being solved through the Founder's business. Mentors and industry experts are strategically introduced during this stage.

Cohort Offered: Quarterly
Capacity: 10-15 teams
Participants: Co-Founder's; up to \$300K raised or revenue

Post Accelerate & Dominate

16-week customized experience to accelerate growth to a global established enterprise, creating more jobs, more revenue, and positive impact. Resources are available for founders looking to IPO as well as other methods to increase growth such as acquisitions. The track offers founders access to invite-only exclusive dinners with major industry players to increase brand recognition.

Cohort Offered: Annually
Capacity: 5 teams
Participants: Co-Founder's; \$3M+ revenue

Levan Center: Founder's Journey

Program Application Process

Three Steps: Application, Selection Committee Review, Decision

Virtual Platforms: Startup Space & Gust Launch

Ideate

Develop an idea through design thinking and prototyping

Incubate

Advance the founder's idea to a revenue generating firm

Accelerate

Provide support and networks for further funding and brand recognition

Post-Accelerate

Accelerate growth to a global brand and access to further funding

Module Delivery



Masterclass & Open Innovation

- 4 weeks
- Bi-monthly
- 8 - 10 Startup Teams: (16 - 20 Co-founders)
- T & TH: Evening Sessions

Masterclass & Open Innovation

- 6 weeks
- Quarterly
- 10 - 15 Startup Teams: (20 - 30 Co-founders)
- M W F: Morning & Evening Sessions

Customized Events & Introductions

- 12 weeks
- Bi-annually
- 20 Startup Teams: (40 Co-founders)
- M W F: Morning & Evening (customized)

Customized Events & Introductions

- 16 weeks
- Annually
- 10 Startup Teams: (20 Co-founders)
- M W F: Morning & Evening (customized)

Learning Objectives



- Define Challenge
- Product Roadmap
- Pitch Plan
- Sales & Marketing

- Creating Corporate Structure
- Attract & Retain Top Talent
- Financial Structure & Co-Founder
- Sales & Marketing
- Mentor Rapid Feedback
- Industry Track Achievement Dinner

- Scaling a Team
- Raising Capital
- Financial Structure & Co-Founder
- Customer Acquisition
- When or If to IPO
- Customized Founder Dinners

- Global Speaking Engagements
- Introductions to Funders
- Levan Center: Tech Gala Awards Dinner
- Founder Dinners

Memberships

The Levan Center offers a variety of memberships to fit your needs.



Night & Weekends



Community Desk



Reserved Desk



Reserved Office



Maker



Corporate



Virtual



Supporter

Wraparound Services



Legal Services



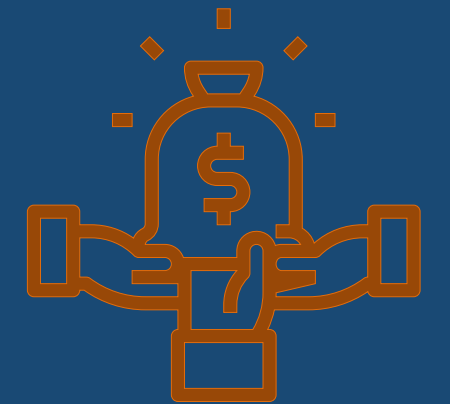
Marketing Services



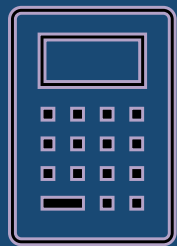
Self-Care Management



Network



Funding



Accounting services



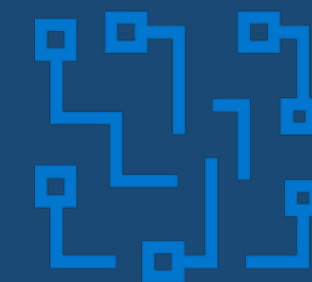
Mentors



Talent pipeline

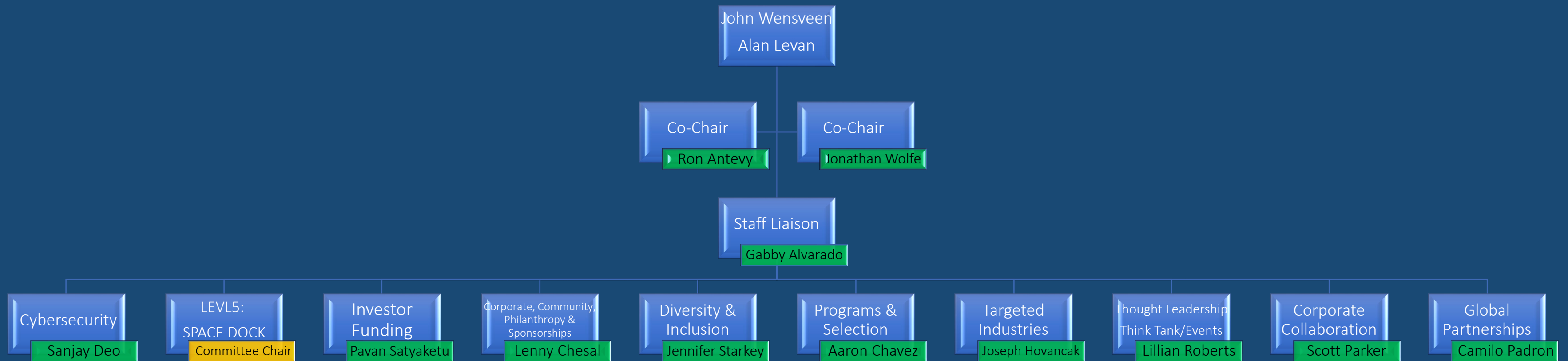


Florida LambdaRail (FLR)
100 Gbps fiber optic network



High Performance Computer

Community Advisory Council



Aviation & Aerospace - **Michael New**
Financial Services – **Pablo Pino**
Global Logistics – **Gary Goldfarb**
Headquarters - **TBD**
Life Science (Health/Medical) – **Jeff Sturman**
Manufacturing - **TBD**
Marine Industries - **Phil Purcell**
Technology – **Hugo Perez**

Cybersecurity

Purpose-built, military-grade cyber range consisting of 1,500 sq. ft. designed to serve the community, including industry, government, and academia, in the development of cybersecurity strategies and training.

Cyber Aware

Cyber Knowledgeable

Cyber Intelligent



Technology Makerspace

Robots

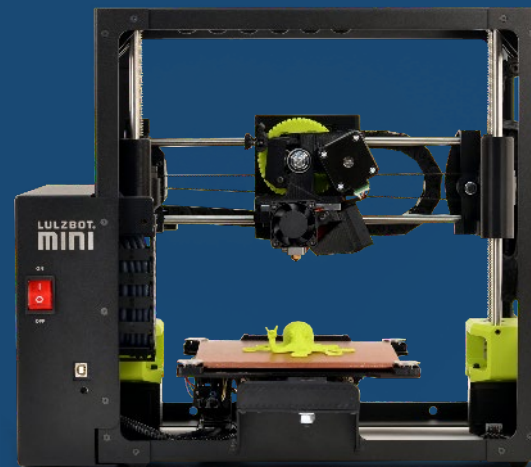
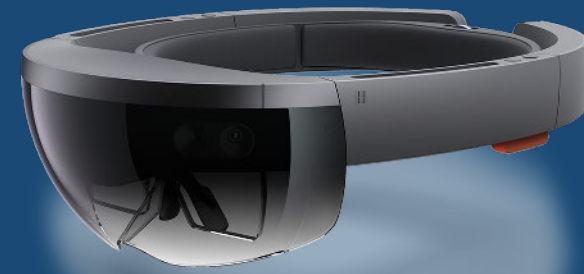
AR/VR Headsets

3D Printers

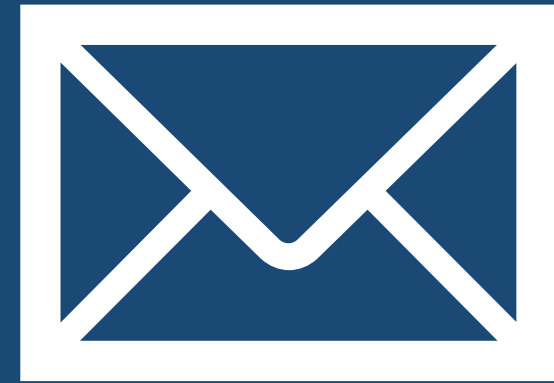
3D Scanners

AI / Machine Learning

Drones



Join Our Mailing List



FOLLOW US
@SFLInnovation

